

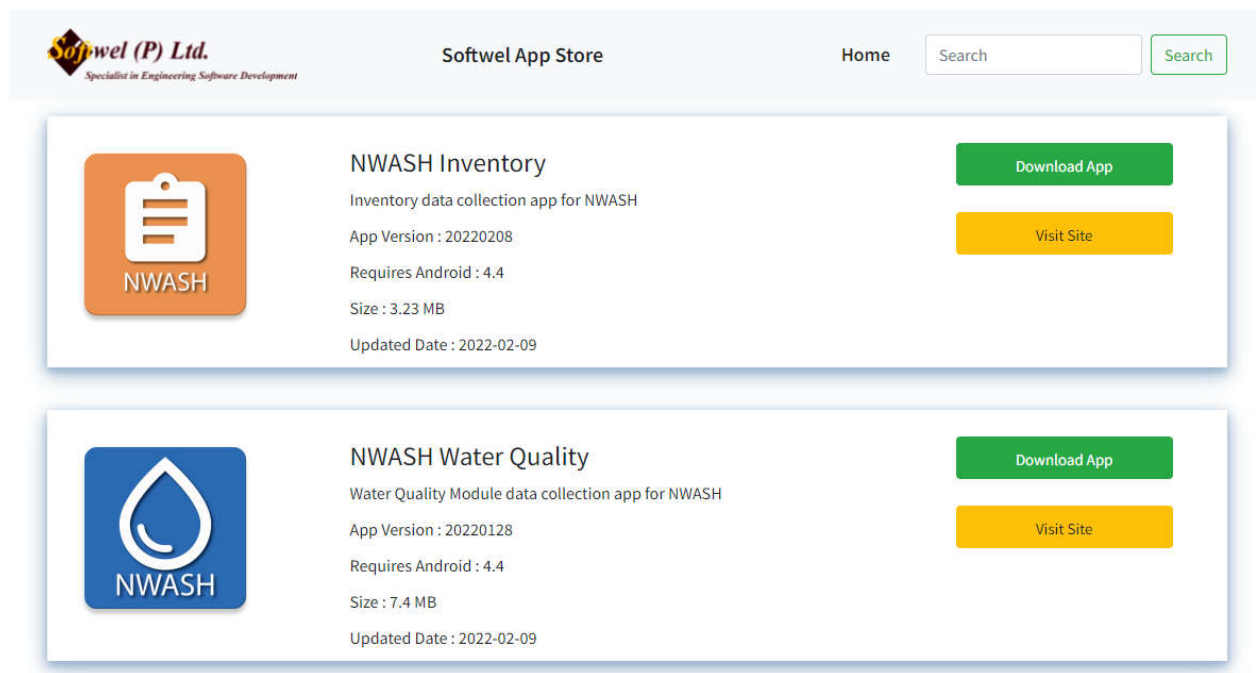
Manual to Update Inventory Application from Softwel App Store

Important: Please don't uninstall the app if you are updating.

Step1: Go to any browser in your phone (Google Chrome, Opera, UC Browser.....)

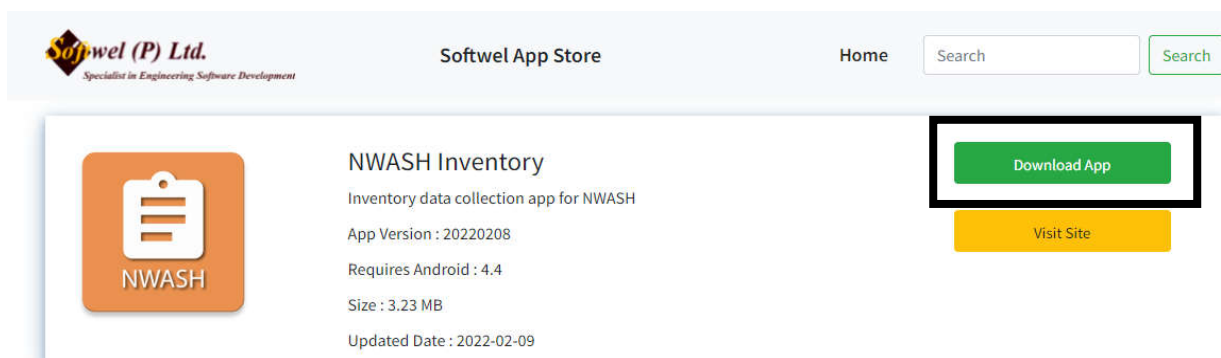
Step 2: Go to this site/link <http://apps.softwel.com.np/home/getCategoryByid/27>

Step 3: Softwel App store looks like this:



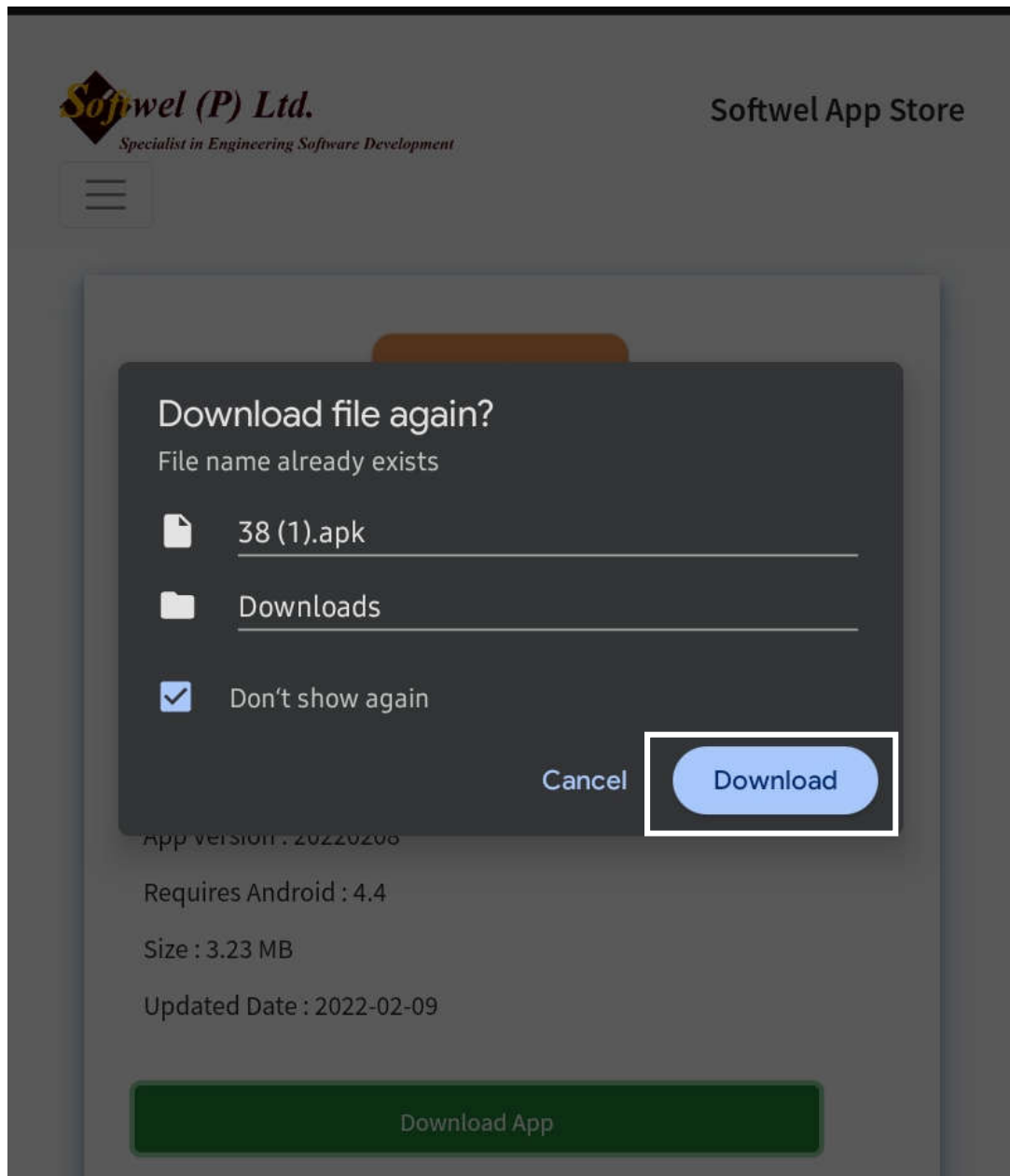
The screenshot shows the Softwel App Store interface. At the top left is the logo for Softwel (P) Ltd. with the tagline 'Specialist in Engineering Software Development'. The page title is 'Softwel App Store'. There is a 'Home' link and a search bar with a 'Search' button. Below the header, there are two app cards. The first card is for 'NWASH Inventory', which is an inventory data collection app for NWASH. It has an app version of 20220208, requires Android 4.4, is 3.23 MB in size, and was updated on 2022-02-09. It features a green 'Download App' button and a yellow 'Visit Site' button. The second card is for 'NWASH Water Quality', which is a water quality module data collection app for NWASH. It has an app version of 20220128, requires Android 4.4, is 7.4 MB in size, and was updated on 2022-02-09. It also features a green 'Download App' button and a yellow 'Visit Site' button.

Step 4: Select the **Download App** next to NWASH Inventory Application.

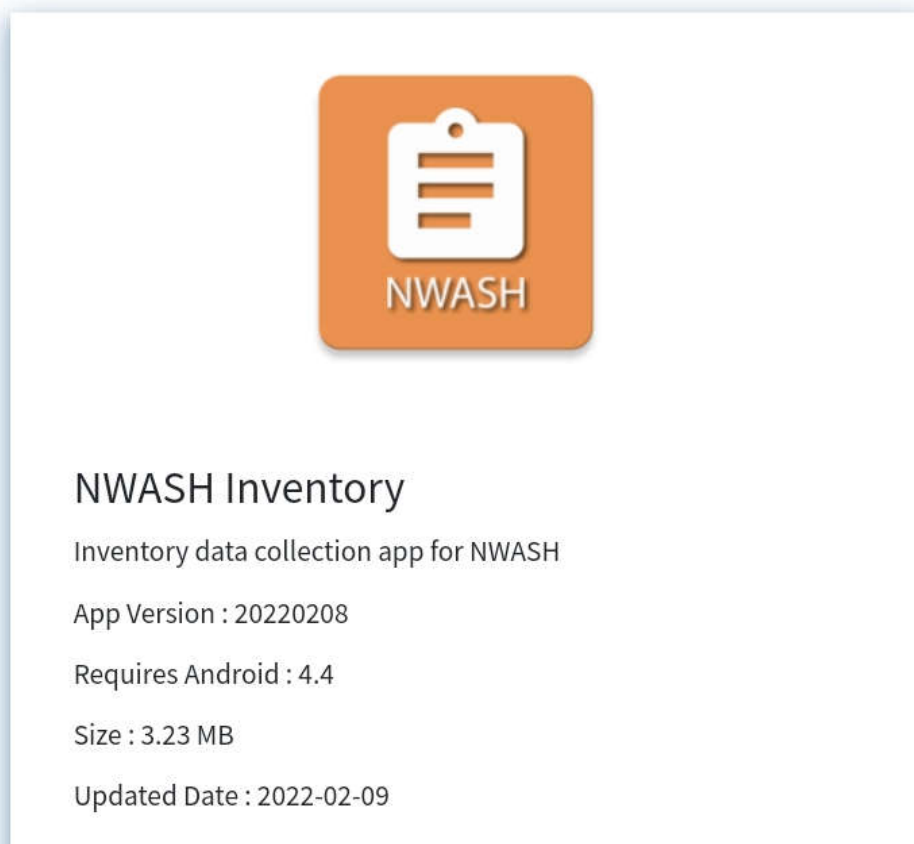
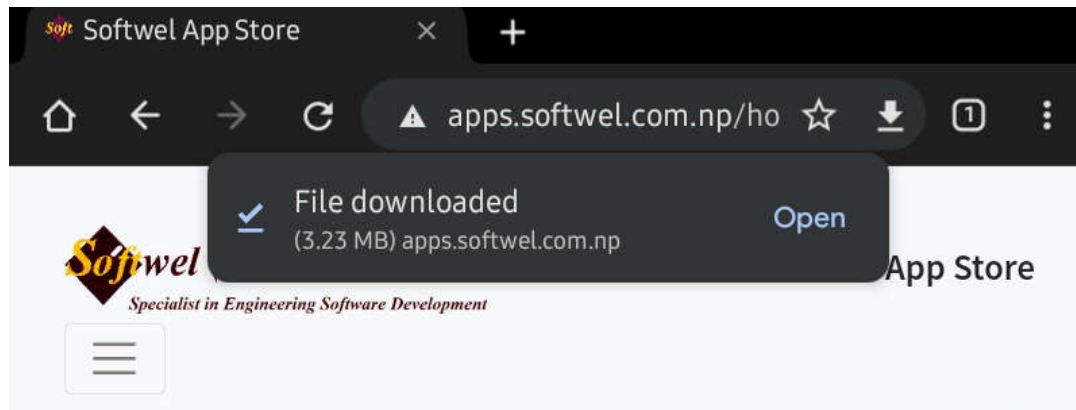


This screenshot is a close-up of the 'NWASH Inventory' app card from the previous screenshot. The 'Download App' button is highlighted with a black rectangular box, indicating the action to be taken in Step 4. The app details remain the same: NWASH Inventory, inventory data collection app for NWASH, app version 20220208, requires Android 4.4, size 3.23 MB, updated on 2022-02-09.

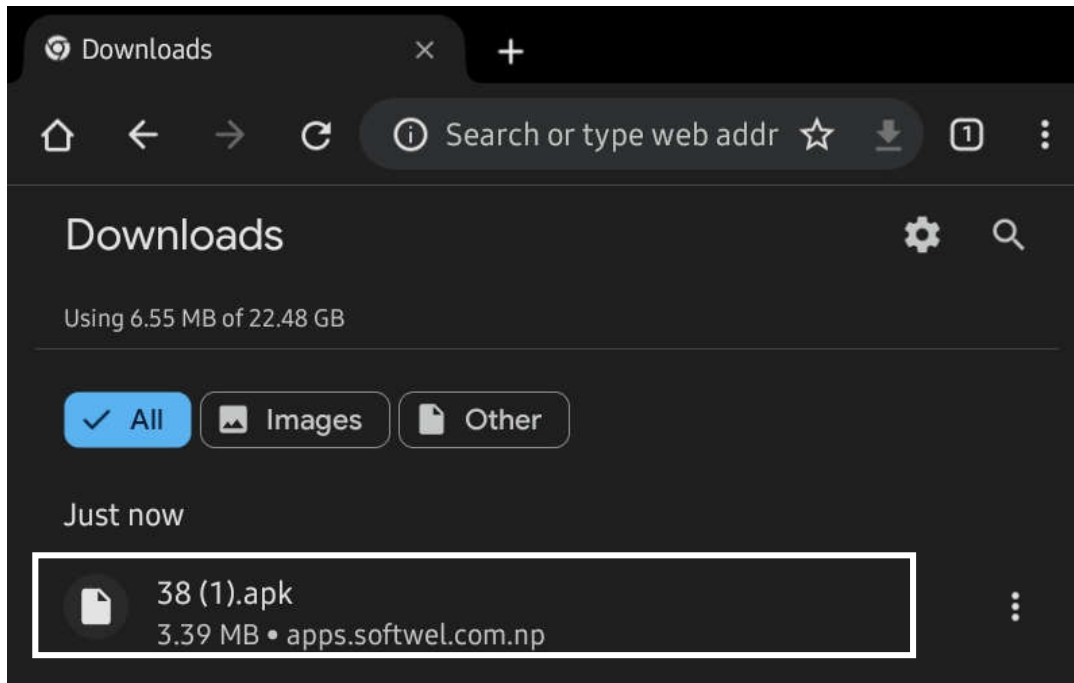
Step 5: Your device will notify you to start the downloading, please select **Download** option.



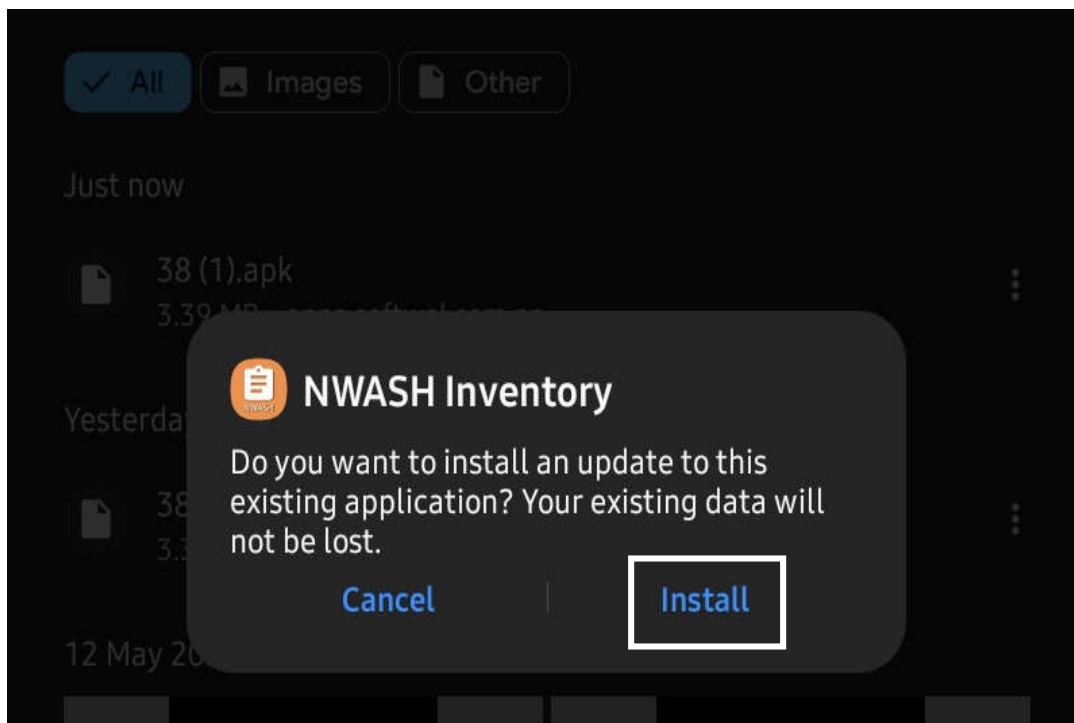
Step 6: After that the Inventory App apk file will be downloaded in your device.



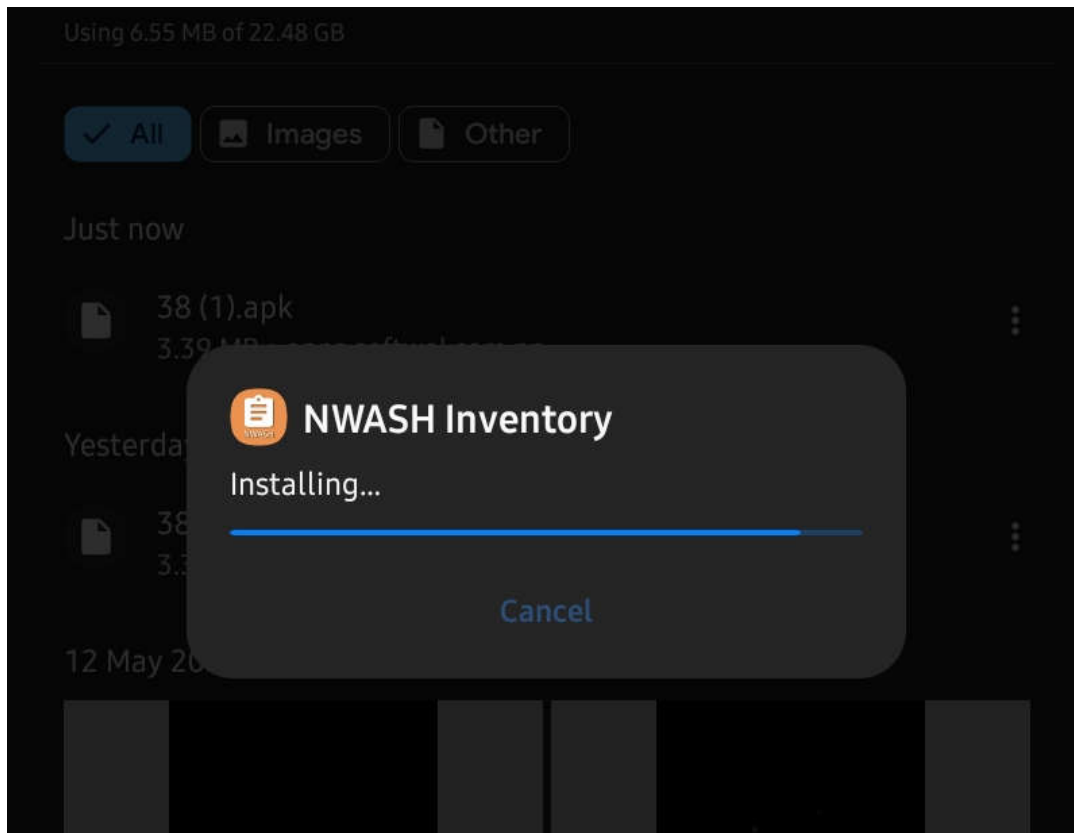
Step7: After the app (.apk) is downloaded to your device, open the downloads of your browser and select that .apk file to start the installation process.



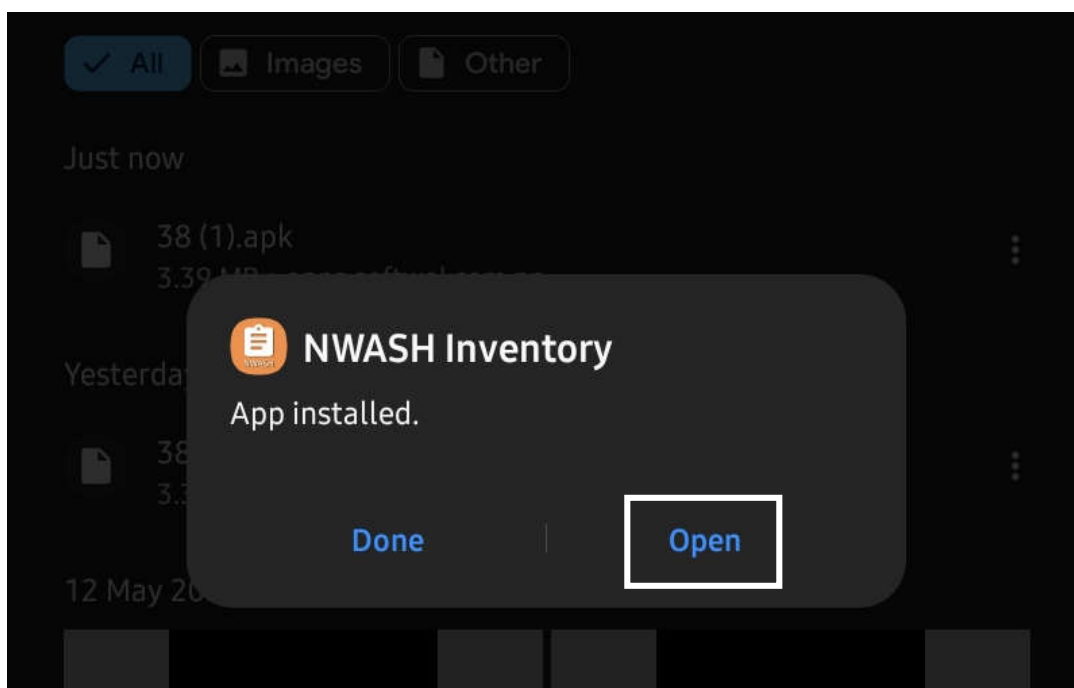
Step 8: After selecting the downloaded file, a dialogue box that will ask you to install Inventory app. Please be inform that by installing this app your existing surveyed data won't be deleted, the app will simply be updated.



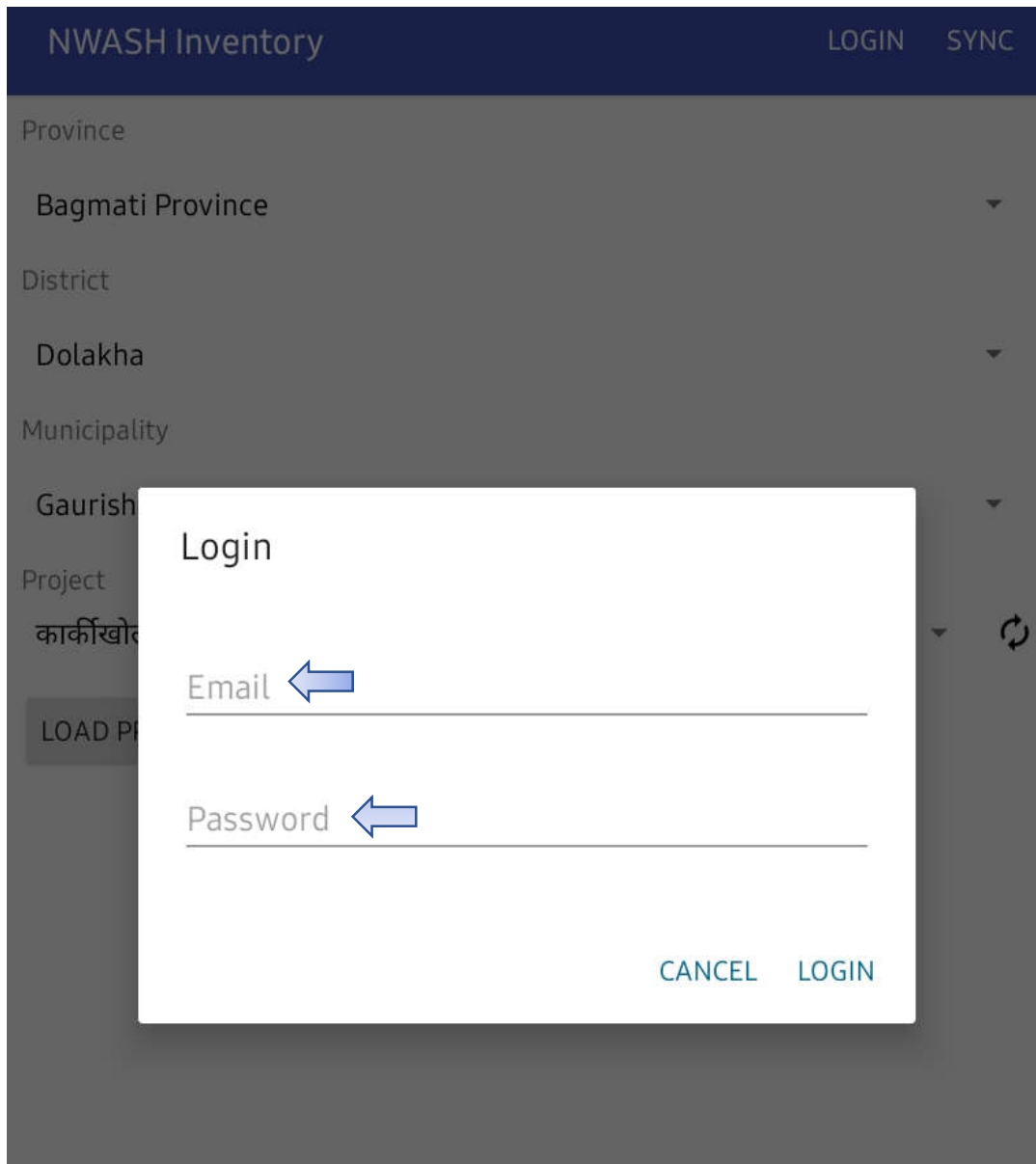
Step 9: After you select the install option the app will start to get installed.



Step 10: NWASH Inventory App will be installed after some time and this notification will be displayed. Now you have to open the app by selecting **Open** option



Step 11: After opening the app, please login using your user name and password.



The screenshot shows the NWASH Inventory app interface. At the top, there is a dark blue header with the text "NWASH Inventory" on the left and "LOGIN" and "SYNC" on the right. Below the header, there is a list of location options: Province, District, Municipality, and Project. The "Province" section is expanded, showing "Bagmati Province". The "District" section is expanded, showing "Dolakha". The "Municipality" section is expanded, showing "Gaurish". The "Project" section is expanded, showing "कार्कीखोला". A "LOAD P" button is visible at the bottom left. A white login dialog box is overlaid on the screen, titled "Login". It contains two input fields: "Email" and "Password". Both fields have a blue arrow pointing to the right, indicating that the user should enter their email and password. At the bottom right of the dialog box, there are two buttons: "CANCEL" and "LOGIN".

Your app will start working without any issue and you can continue the survey work again!!!

Prepared by: NWASH technical Team